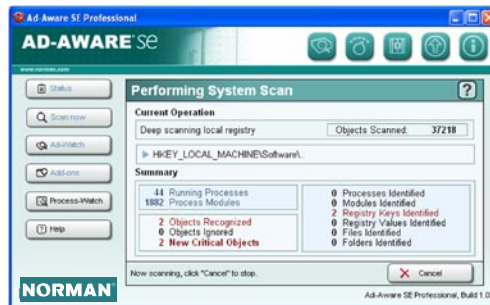


Norman Ad-Aware SE Plus Edition

Spyware and Adware have rapidly become the number one threat to your computer with over 90% of computers already infected. Be prepared to meet these malware threats in a professional manner with a professional partner.

Spyware and Adware include malware like "Trojans", Web Bugs, Advertiser Software, Dialers, Parasites, Scumware, Browser hijackers, Keyboard sniffers, Monitoring Software and more. These types of malware are often made by publishers that allow them to snoop on your browsing activity, see what you purchase and send you "pop-up" ads. They can slow down your PC, cause it to crash, and record your credit card numbers and passwords. If you're like most Internet users, chances are you're probably infected with these files. Simply surfing the Internet, reading email, downloading music or other files can infect your PC without you knowing it.

**Full Protection
against Spyware**



Real-time detection, blocking and removal of such malware is becoming more and more imperative, and the only way to do so is to use tools dedicated to perform these tasks, Norman Ad-Aware SE Plus is such a tool.

What is Norman Ad-Aware SE Plus Edition?

Norman Ad-Aware SE Plus edition offers you a comprehensive tool in the battle against Spyware and Adware, securing your privacy. The Plus edition includes real-time protection through the Ad-Watch real-time monitor that allows you not only to detect

privacy threats to your computer but also block them from integrating into your system in the first place! It is easy to install and manage and it updates itself over the Internet.

Main features of Norman Ad-Aware SE Plus

**Real-time Protection
while surfing the Internet**

Real-time Protection with Ad-Watch

Ad-Watch is the real-time monitor included in the Norman Ad-Aware SE Plus Edition. Ad-Watch goes beyond what other security suites offer by adding a proactive layer of protection to your system. It runs silently in the background, watching for Malware/parasites that try to install on or modify your system.



While Norman Ad-Aware SE detects and cleans your system from known Malware and advertising parasites, Ad-Watch goes even further by catching these programs before they can integrate into your system.

Cleanup of infected systems

You can lock the start-up sections of your registry, block possible and actual browser hijack attempts, block suspicious processes, lock executable file associations, block malicious cookies, block pop-ups, and using the all new CSI technology it can protect you from unknown variants as well.



This version of Ad-Watch includes a site manager where you can edit the included pop-up blacklist. It also includes a new rule editor that allows you to configure Ad-Watch to pre-allow changes to the registry.

Norman is one of the world's leading companies within the field of data security. With products for virus control, spam control, email control, download control and personal firewall, the company plays an important role in the data industry.



NORMAN
www.norman.com

On-Demand scan

Norman Ad-Aware SE Plus Edition also includes an on-demand scanner which scans your system for any security threats related to Spyware and Adware. The scanner can be configured according to user preference. Norman has made a default configuration that performs an in depth scan of the system, this scan can be set to run at start-up, ensuring that you have a clean system every time you start.

Other Important features of Norman Ad-Aware Plus Edition includes

Comprehensive feature list

- ✓ Scanning results screens and detailed statistics
 - New Scan Result view, includes a scan summary and detailed view
 - Links to more information on detected content from our website like the
 - Threat Assessment Chart (TAC)
 - Includes support for separate removal log files
 - Allows adding a reference summary/index to log files
- ✓ Safety option that allows you to write protect sensitive system files such as the host file
- ✓ Extended protection against DLL-injection, SE can unload process modules on the fly
- ✓ Ad-Watch uses our all new CSI (Code Sequence Identification) technology to identify new and unknown variants of known targets.
- ✓ Scans registry branches of multiple user accounts
- ✓ Extended Scanning for known and unknown/possible Browser-Hijackers
- ✓ Scans and lists alternate Data-streams on NTFS volumes
- ✓ Write protect system files after repair
- ✓ Limit drive selection to fixed drives
- ✓ Ad-Watch now supports Cookie Blocking
 - Administrator can edit the popup-blacklist included
- ✓ Block pop-ups aggressively
 - Administrator can edit the popup-blacklist included
- ✓ Rules editor for pre-defined blocking exclusions



System requirements

System requirements

Norman Ad-Aware SE is compatible with Microsoft Windows 98/Me/NT/2000/XP/2003 and Microsoft Windows Terminal Services.

Norman solutions for clients/workstations: Norman Virus Control for Windows 95, 98, Me, NT4.0, 2000, XP, OS/2, Linux (On-Demand scanning)
• Norman Internet Control for Windows 95, 98, Me, NT4.0, 2000, XP • Norman Personal Firewall • Norman Ad-Aware

Norman solutions for servers: Norman Virus Control for Microsoft Windows NT4.0, 2000, 2003 • Norman Virus Control Firebreak for Novell Network 4.11 and later • Norman Virus Control for Linux • Norman Virus Control for OS/2

Norman solutions for web/gateways/mailservers: GFI MailEssentials • GFI MailSecurity • GFI DownloadSecurity • NVcnet • Norman Virus Control for Lotus Domino (Win32, OS/2) • Norman Virus Control for Firewall-1 NG • Norman Virus Control for Microsoft Internet Information Server • Norman Virus Control for Microsoft Exchange • Norman Virus Control for Microsoft Exchange 5.5 • Norman Virus Control for MIMEsweeper



NORMAN[®]
www.norman.com